

# RCU 3 Ch

## 3 Station Remote Control Unit

innova.no

Part number: NA

### Subsea valve pack with 3 bidirectional, proportional directional controlled valves.

Each channel features proportional pressure control with individual pressure sensor.

Inlet oil pressure and temperature as well as return oil pressure are also monitored.

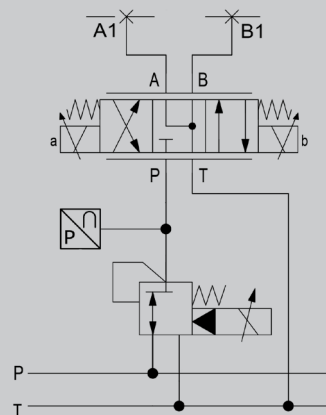
Valve control and communication is provided by Innova's PIO36 pressure tolerant controller boards, enabling full control of the valve pack via serial or Ethernet network (Modbus RTU or TCP).

Innova's topside GUI software is used to control and monitor all functions of single or multiple valve packs. The valve packs can also easily integrate into Client's existing control system.

### Key features

3 off 4/3-way valves

- Flow, directional and pressure control
- Individual pressure monitoring on each port
- Temperature sensor
- 3000 m seawater depth rating
- Interface for Oceaneering torque tool



Preliminary version No. 01

Last modified: June 19, 2024

Note: We accept no liability for any printing errors or changes in specification.

## HYDRAULIC FUNCTIONS

3 off 4/3-way NG6 control valves

- Maximum Working Pressure = 250bar
- Valve max flow = 40 lpm
- Pressure transmitters on P and T ports and at each port

## INTERFACE

- G1/2 hydraulic supply port (P)
- G3/4 hydraulic return port (T)
- G1/2 hydraulic outlets ports (A/B)
- 1/4" SWAGELOK QUICK CONNECTOR for filling and draining of compensation fluid
- G3/8 for comp. relief valve
- G3/8 pressure transmitter port
- 1 x 5506-2013 Connector for power and communication
- 1 x connector for interfacing Oceaneering torque tool



valve pack with accessories

## ELECTRICAL

- Innova PIO36 pressure tolerant embedded controller
- Ethernet, RS-232 or RS-485 communication link
- Max power consumption: 10 A @ 24 VDC
- Water alarm
- Temperature sensor
- 110 / 230 VAC (optional)
- Seal test port (optional)

## MECHANICAL

- Hard anodized aluminium and POM housing
- Polycarbonate lid
- Weight: 45 kg (air) & 30 kg (water, excl. comp. fluid)
- Dimension: (L x W x H): 350 mm x 212 mm x 325 mm (excl. connector and compensator)
- Pressure compensator included
- Depth rating: 3000 msw
- Temperature range: -18 °C to 40 °C
- Delivered in a transport case, together with PC, GUI Software and required accessories

## SOFTWARE

Delivered with standard Innova software with graphical user interface to control each valve, read sensor values, calibrate sensors and log data.

Our software engineers will also assist integration with existing control systems on request.

